

COMPANY PROFILE

OF

**INDUSTRIAL TECHNICAL CONSULTANT
(ITC)**

RAIPUR (C.G.) INDIA

YEAR OF ESTABLISHMENT -

APRIL - 2000

NAME OF PARTNERS -

- 1. Mr. S.NARAYANAN - HAVING EXPERIENCE OF 36 YEARS**
- 2. Ms KAVITA SHARMA - HAVING EXPERIENCE OF 24 YEARS**

AREA OF WORK

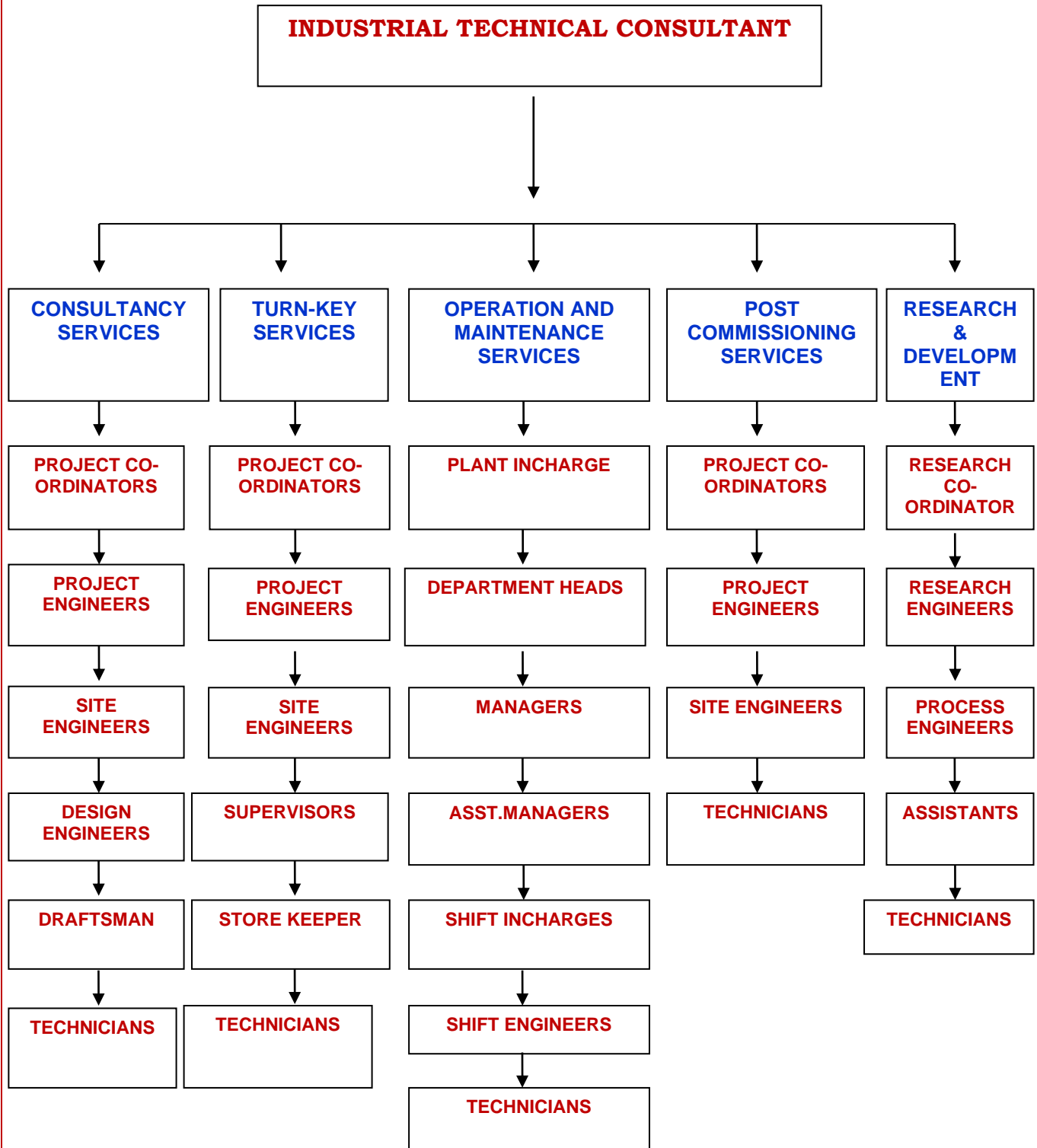
- 1. Sponge Iron Plant**
- 2. Pellet Plant**
- 3. Power Plant**
- 4. Steel Melting Shop**
- 5. Rolling Mill**

SERVICES PROVIDED BY ITC

1. Consultancy Services
2. Turn-Key Services
3. Running Contracts Services
4. Post Commissioning Services
5. Research And Development

EMPLOYEES DETAILS-

WE ARE HAVING PROFICIENCY IN THEIR RESPECTIVE FIELDS. THE EMPLOYEES ARE BROADLY DIVIDED IN THE FOLOWING FACULTY -



REGISTRATION DETAILS -

DATE OF REGISTRATION AND NO-07.06.2003 / 075

SERVICE TAX REGISTRATION DETAILS -

ST/C&I/ITC/R-ST/RPR/06/2003

HEAD OFFICE -

O-10, SECTOR- II, AVANTI VIHAR
RAIPUR – 492006 (C.G.)
FAX- +91-771-4011466

EMAIL- itechc@rediffmail.com , itechc@gmail.com

WEB SITE: www.spongeitc.com

CONTACT DETAILS -

Mr. S.NARAYANAN= + 91 – 99930 29536
+ 91 – 93291 00882

Ms KAVITA SHARMA + 91 – 99930 29538
+ 91 – 93291 29538

A) CONSULTANCY SERVICES

DRAWING AND DESIGN

1. WE PROVIDE DETAILED PLANT LAYOUT BASED ON THE LAND MAP PROVIDED BY THE CLIENT.
2. WE PROVIDE DETAILED MANUFACTURING DRAWING OF KILN, COOLER, ABC AND DSC TO THE MANUFACTURER FOR THE MANUFACTURING.
3. WE PROVIDE DETAILED SPECIFICATION OF BOUGHT OUT EQUIPMENTS WITH THE QUANTITY REQUIRED.
4. WE PROVIDE SUPPLIER'S LIST TO SEND THE ENQUIRIES OF EQUIPMENTS FOR QUOTATION PURPOSE.
5. WE ASISTS CLIENT FOR THE NEGOTIATION AND FINELLISATION OF EQUIPMENTS.
6. WE PROVIDE DETAILED CIVIL & STRUCTURAL DRAWINGS BASED ON THE LOAD BEARING CAPACITY PROVIDED BY THE CLIENT WITH ADEQUATE FACTOR OF SAFETY.
7. WE PROVIDE DETAILED MECHANICAL STRUCTURES DRAWINGS BASED ON THE WIND LOAD AND OTHER SAFETY PARAMETERS.
8. WE PROVIDE ELEVATION DRAWINGS FOR ALL BUILDINGS.

SUPERVISION

WE DEPUTE OUR ENGINEERS AT THE PLANT SITE, FOR THE SUPERVISION OF ALL PLANT ACTIVITIES.

INSPECTION

OUR ENGINEERS VISITS AT MANUFACTURER'S PLACE, ON BEHALF OF CLIENT FOR THE INSPECTION OF EQUIPMENTS.

COMMISSIONING

WE PROVIDE COMMISSIONING SERVICES FOR 7 DAYS AND HANDOVER THE PLANT TO THE CLIENT.

TRAINING

WE ALSO TRAIN UP THE CLIENT'S STAFF DURING COMMISSIONING.

B) TURN KEY SERVICES

WE PROVIDE OUR SERVICES ON TURN-KEY BASIS AND TAKES THE TOTAL RESPONSIBILITY OF PROJECT FROM GREEN FIELD TO COMMISSIONING.

The brief of the jobs are given below –

1. Preparation of civil foundation drawings and design based on the load bearing capacity of soil provided by client.
2. Preparation of structural and mechanical drawings and design based on the wind load and other factors of safety.
3. Execution of civil & structural works of plant building from green field.
4. Erection of plant building structures.
5. Procurement, erection, installation, trial run and commissioning of plant machineries.
6. Cold trial run.
7. Commisioning.
8. Training

B) RUNNING CONTRACT SERVICES

WE PROVIDE OPERATION AND MAINTENANCE SERVICES OF THE PLANT, AFTER COMMISSIONING ON THE MUTUALLY AGREED TERMS.

C) POST COMMISSIONING SERVICES

WE ARE HAVING A WELL ESTABLISHED SERVICE DIVISION, IN WHICH WE PROVIDE SERVICES FOR THE ALIGNMENT OF KILN, COOLER AND MAINTENANCE OF OTHER CRITICAL EQUIPMENTS AND ALSO GIVE SUGGESTIONS TO SOLVE THE TEETHING PROBLEM.

D) RESEARCH AND DEVELOPMENT

WE ARE HAVING OUR OWN SPONGE IRON PLANT AT RAIPUR (C.G.) FOR THE RESEARCH AND DEVELOPMENT.

THE MAIN AIMS OF R&D ARE AS GIVEN BELOW-

1. ENERGY SAVING
2. ENERGY UTILISATION
3. REDUCTION IN FUEL CONSUMPTION
4. HIGH PRODUCTIVITY
5. IMPROVEMENT IN QUALITY
6. COST SAVING
7. POLLUTION CONTROL
8. GLOBALLY ECONOMIC VIABILITY

APART FROM THE ABOVE, WE ARE UPGRADING OUR TECHNOLOGY AND CAPACITIES ON DAY TO DAY BASIS FOR BETTER PERFORMANCE OF THE PLANT.

RECENTLY, WE HAVE DEVELOPED A PLANT CAPACITY OF 900 TPD AND 1200 TPD, IN WHICH WE HAVE SUCCESSFULLY COMMISSIONED 900 TPD PLANT WHICH IS RUNNING WITH GOOD QUALITY AND QUANTITY.

THE 1200 TPD PROJECT IS UNDER EXECUTION.

THIS IS A GREAT ACHIEVEMENT OF OUR TEAM AFTER THE DEVELOPMENT OF 350, 500, 600 AND 700 TPD CAPACITIES.

**PROJECT DETAILS OF M/s INDUSTRIAL TECHNICAL
CONSULTANT (SPONGE IRON PLANT)**

1) 900 TPD SPONGE IRON PROJECTS

<u>S.NO.</u>	<u>NAME OF THE CLIENT</u>	<u>CAPACITY</u>	<u>LOCATION</u>	<u>YEAR</u>
<u>PROJECTS UNDER PROGRESS</u>				
1	M/s RUNGTA MINES LIMITED	4 X 900 TPD	CHALIYAMA	
2	M/s SHYAM METALICS AND ENERGY LIMITED	2 X 900 TPD	SAMBALPUR	
3	M/s SHYAM SEL AND POWER LIMITED	2 X 900 TPD	JAMURIA	
4	M/s KARNIKRIPA ISPAT AND POWER LIMITED	2 X 900 TPD	RAIPUR	
5	M/s NUTAN IRON AND POWER LIMITED	1 X 900 TPD	RAIPUR	
6	M/s GIRIDHAN METAL LIMITED	2 X 900 TPD	W.B.	

2) 650 TPD SPONGE IRON PROJECTS

<u>S.NO.</u>	<u>NAME OF THE CLIENT</u>	<u>CAPACITY</u>	<u>LOCATION</u>	<u>YEAR</u>
PROJECTS COMPLETED				
1	M/s BAJRANG METALLIKS LTD	2 X 650 TPD	RAIPUR	2012-13
2	M/s SHAKAMBARI ISPAT LTD	1 X 650 TPD	RAIPUR	2019-20
3	M/s SHYAM METALLIC LTD	1 X 650 TPD	SAMBALPUR	2019-20
4	M/s SHYAM SEL LTD	4 X 650 TPD	JAMURIA	2018-19
5	M/s NILACHAL POWER & ISPAT LIMITED	1 X 650 TPD	JHARKHAND	2021-22
6	M/s NILACHAL POWER & ISPAT LIMITED	1 X 650 TPD	JHARKHAND	2022-23
7	M/s SURYADEV ALLOYS & POWER PVT.LTD	2 X 650 TPD	GUMMIDIPUN DI (T.N.)	2022-23
PROJECTS UNDER PROGRESS				
8	M/s RUNGTA MINES LIMITED	7 X 650 TPD	DHENKANAL	
9	M/s RUNGTA MINES LIMITED	6 X 650 TPD	KAMANDA	
10	M/s RUNGTA MINES LIMITED	1 X 650 TPD	KARAKENDRA	
S.NO. NAME OF THE CLIENT CAPACITY LOCATION YEAR				
11	M/s MAHENDRA SPONGE & POWER PVT.LTD.	2 X 650 TPD	C.G.	
12	M/s N.R.ISPAT PVT.LTD.	2 X 650 TPD	RAIGARH	

3) **500 TPD SPONGE IRON PROJECTS**

<u>S.NO.</u>	<u>NAME OF THE CLIENT</u>	<u>CAPACITY</u>	<u>LOCATION</u>	<u>YEAR</u>
<u>PROJECTS COMPLETED</u>				
<u>CONVENTIONAL TECHNOLOGY</u>				
1	M/s S.A.L.STEEL LIMITED	1 X 500 TPD	GANDHIDHAM	2003-05
2	M/S RAIPUR ALLOYS LIMITED	2 X 500 TPD	RAIPUR	2001-02
3	M/s CORPORATE ALLOYS & ISPAT PVT. LTD	2 X 500 TPD	RAIPUR	2005-06
4	M/s VANDANA GLOBAL LIMITED	1 X 500 TPD	RAIPUR	2003-05
5	M/s PRAKASH INDUSTRIES LTD	4X 500 TPD	CHAMPA	2010-11
6	M/s CORPORATE ISPAT ALLOYS LIMITED	2 X 500 TPD	RANCHI	2011-12
7	M/s ABHIJIT INFRASTRUCTURE LIMITED	2 X 500 TPD	RANCHI	2012-13
8	M/s PRAKASH INDUSTRIES LTD	2 X 500 TPD	CHAMPA	2012-13
9	M/s SHRI JAGANNATH STEEL AND POWER LIMITED	1 X 500 TPD	BARBIL	2020-21
10	M/s RUNGTA MINES LIMITED	2 X 500 TPD	DHENKANAL	2019-20
<u>PRE-HEATING TECHNOLOGY</u>				
11	M/s BMM ISPAT PVT LIMITED	2 X 500 TPD	HOSPET	2007-08

4) **350 TPD SPONGE IRON PROJECTS**

<u>S.NO.</u>	<u>NAME OF THE CLIENT</u>	<u>CAPACITY</u>	<u>LOCATION</u>	<u>YEAR</u>
PROJECTS COMPLETED				
1	M/S GOA SPONGE AND POWER PVT LIMITED	1 X 350 TPD	GOA	2003-05
2	M/s M.S.P. STEEL AND POWER LIMITED	2 X 350 TPD	RAIGARH	2003-05
3	M/s BEEKAY STEEL & POWER LTD	1 X 350 TPD	BARBIL	2004-05
4	M/s BAJRANG POWER & ISPAT LIMITED	2 X 350 TPD	RAIPUR	2003-04
5	M/s RENGARAAJ ISPAT (P) LIMITED	1 X 350 TPD	SALEM	2003-04
6	M/s NIXON STEEL & POWER LTD	1 X 350 TPD	ROURKELA	2003-04
7	M/s ANKIT STEELS PVT. LTD	1 X 350 TPD	BANKURA	2003-04
8	M/s ADHUNIK ALLOYS & POWER LTD	2 X 350 TPD	JAMSHEDPUR	2004-05
9	M/s SKS ISPAT PVT LTD	2 X 350 TPD	RAIPUR	2004-05
10	M/s CREST STEEL & POWER PVT LTD	3 X 350 TPD	DURG	2004-05
11	M/s ABHIJEET INFRASTRUCTURES PVT LTD	1 X 350 TPD	RAIPUR	2004-06
12	M/s API ISPAT & POWERTECH LTD	2 X 350 TPD	RAIPUR	2004-06
13	M/s RANA STEELS PVT LTD	1 X 350 TPD	TALCHER	2003-04
14	M/s ELECTROTHERM (INDIA) LTD	2 X 350 TPD	GANDHIDHAM	2005-06
15	M/s ACTION ISPAT POWER PVT LTD	2 X 350 TPD	JHARSUGUDA	2004-05
16	M/s MONNET ISPAT LTD	4 X 350 TPD	RAIGARH	2004-06
17	M/s GLOBAL HITECH	1 X 350 TPD	GANDHIDHAM	2004-05

<u>S.NO.</u>	<u>NAME OF THE CLIENT</u>	<u>CAPACITY</u>	<u>LOCATION</u>	<u>YEAR</u>
18	M/s MAITHAN ISPAT LTD	2 X 350 TPD	JAJPUR ROAD	2004-05
19	M/s TRIMULA INDUSTRIES PVT LTD	1 X 350 TPD	SINGRAULI	2005-06
20	M/s SHYAM DRI POWER LIMITED	4 X 350 TPD	JHARSUGUDA	2004-05
21	M/s MID INDIA ENG.CO.LIMITED	1 X 350 TPD	GANDHIDHAM	2007-09
22	M/s ARYAN ISPAT LIMITED	1 X 350 TPD	SAMBALPUR	2007-09
23	M/s K.J.S.AHLUWALIA STEEL & POWER DIVISION (SECOND KILN)	1 X 350 TPD	BARBIL	2010-11
24	M/s BRAHMAPUTRA METALLICS PVT.LTD.	1 X 350 TPD	RANCHI	2009-10
25	M/s GALLENTT ISPAT LIMITED	2 X 350 TPD	GORAKHPUR	2009-10
26	M/s SUNFLAG IRON & STEEL COMPANY LTD	1 X 350 TPD	BHANDARA	2010-11
27	M/s NIROSE ISPAT LIMITED	1 X 350 TPD	RAIPUR	2009-10
28	M/s SHYAM SEL LTD	2 X 350 TPD	JAMURIA	2018-19
29	M/s KJS AHLUWALIA SPONGE AND POWER DIVISION (THIRD KILN)	1 X 350 TPD	BARBIL	2018-19
30	M/s RUNGTA MINES LIMITED	2 X 350 TPD	CHALIAMA	2018-19
31	M/s SHYAM SEL LIMITED	2 X 350 TPD	JAMURIA	2019-20

<u>S.NO.</u>	<u>NAME OF THE CLIENT</u>	<u>CAPACITY</u>	<u>LOCATION</u>	<u>YEAR</u>
32	M/s SHAKAMBARI ISPAT LIMITED	2 X 350 TPD	PURULIA	2019-20
33	M/s GAGAN FERROTECH LTD	1 X 350 TPD	JAMURIA	2018-19
<u>PROJECTS UNDER PROGRESS</u>				
34	M/s SHYAM STEEL LIMITED	3 X 350 TPD	W.B.	
35	M/s MAITHAN STEEL LIMITED	1 X 350 TPD	C.G.	
36	M/s SUVIDHI SPONGE PVT LIMITED	1 X 350 TPD	C.G.	
37	M/s VRKP ISPAT PVT.LTD.	1 X 350 TPD	BELLARY	
38	M/s VRKP INTEGRATED STEEL INDUSTRIES PVT.LTD.	1 X 350 TPD	BELLARY	

5) **200 TPD SPONGE IRON PROJECTS**

<u>S.NO.</u>	<u>NAME OF THE CLIENT</u>	<u>CAPACITY</u>	<u>LOCATION</u>	<u>YEAR</u>
<u>PROJECTS COMPLETED</u>				
1	M/s GHANKUN STEEL PVT.LTD	1 X 200 TPD	RAIPUR	2014-15
2	M/s MAAN STEEL & POWER LTD	2 X 200 TPD	JAMURIA (W.B.)	2018-19
3	M/s CALSTAR SPONGE PVT LTD	1 X 200 TPD	WEST BENGAL	2019-20

6) 100 TPD SPONGE IRON PROJECTS

<u>S.NO.</u>	<u>NAME OF THE CLIENT</u>	<u>CAPACITY</u>	<u>LOCATION</u>	<u>YEAR</u>
PROJECTS COMPLETED				
CONVENTIONAL TECHNOLOGY				
1	M/s DROLIA ELECTROSTEEL PVT. LIMITED	2 X 100 TPD	RAIPUR	2003-04
2	M/s S.A.L.STEEL LIMITED	2 X 100 TPD	GANDHIDHAM	2003-05
3	M/s NILKANTH CONCAST PVT.LIMITED	1 X 100 TPD	GANDHIDHAM	2003-04
4	M/s MID INDIA ENGINEERING PVT.LTD	1 X 100 TPD	GANDHIDHAM	2004-05
5	M/s DEVI IRON & POWER PVT LTD	3 X 100 TPD	RAIPUR	2004-05
6	M/s NUTAN ISPAT & POWER PVT .LIMITED	1 X 100 TPD	RAIPUR	2004-05
7	M/s SRITHIK ISPAT (P) LIMITED	1 X 100 TPD	GOA	2004-05
8	M/s INDIAN STEEL & POWER PVT.LIMITED	1 X 100 TPD	RAIPUR	2004-05
9	M/s CHAMAN METALLICS PVT. LTD	1 X 100 TPD	CHANDRAPUR	2004-05
10	M/s BHAGAWATI POWER & STEEL PVT LTD	2 X 100 TPD	RAIPUR	2004-06
11	M/s MANGAL SPONGE AND STEEL PVT.	2 X 100 TPD	BILASPUR	2005-06
12	M/s ANJANI STEELS PVT. LTD	1 X 100 TPD	RAIGARH	2004-05
13	M/s MAA KALI ALLOYS UDYOG PVT LTD	2 X 100 TPD	RAIGARH	2005-06
14	M/s MONO STEEL (INDIA) LTD	2 X 100 TPD	GANDHIDHAM	2004-05
15	M/s SHREE SIDHBALI ISPAT LTD	2 X 100 TPD	CHANDRAPUR	2005-06
16	M/s GALLANT METAL LTD	1 X 100 TPD	GANDHIDHAM	2005-06
17	M/s AARTI SPONGE AND POWER LIMITED	3 X 100 TPD	RAIPUR	2004-05
19	M/s MONNET ISPAT LTD	2 X 100 TPD	RAIGARH	2004-06
<u>S.NO.</u>	<u>NAME OF THE CLIENT</u>	<u>CAPACITY</u>	<u>LOCATION</u>	<u>YEAR</u>

20	M/s TRIMULA SPONGE IRON (P) LTD	1 X 100 TPD	RAIPUR	2005-06
21	M/s RAIPUR SPONGE & POWER (P) LTD	1 X 100 TPD	RAIPUR	2004-05
22	M/s BRG STEELS (P) LTD	2 X 100 TPD	JHARSUGUDA	2004-05
23	M/s NAVBHARAT FUSE CO.LIMITED	1 X 100 TPD	JAGDALPUR	2005-06
24	M/s SHIVAM DHATU LTD	2 X 100 TPD	DURGAPUR	2009-10
25	M/s VASWANI INDUSTRIES LIMITED	1 X 100 TPD	RAIPUR	2009-10
26	M/s ARYAN ISPAT LIMITED	1 X 100 TPD	JHARSUGUDA	2007-08
27	M/s B.S.ISPAT LIMITED	2 X 100 TPD	NAGPUR	2010-11
28	M/s SHAKAMBARI ISPAT & POWER LTD	2 X 100 TPD	PURULIA	2018-19
29	M/s BRAVO ISPAT PVT.LTD	1 X 100 TPD	PURULIA	2018-19
30	M/s VARRSANA ISPAT PVT.LTD.	2 X 100 TPD	GANDHIDHAM	2006-07
31	M/s RAYEN STEEL PVT LTD	1 X 100 TPD	HOSPET	2007-08
32	M/s WOFOOR INDUSTRIAL COMPANY	2 X 100 TPD	SAUDI ARABIA	2008-09
33	M/S SHREE SIDHABALI ISPAT PVT.LTD.	1 X 100 TPD	CHANDRAPUR	2008-09
34	M/S CHAMAN METALLICS PVT.LTD.	1 X 100 TPD	CHANDRAPUR	2008-09
35	M/s VIKAS METALLIK PVT.LTD	2 X 100 TPD	CHHATTISGARH	2020-21
36	M/s PUSHP STEEL AND MINING PVT LTD	2 X 100 TPD	CHHATTISGARH	2020-21

PROJECTS COMPLETED

PRE-HEATING TECHNOLOGY

1	M/s KMMI ISPAT PVT.LIMITED	2 X 100 TPD	HOSPET	
2	M/s HARE KRISHNA METALLICS PVT LTD	2 X 100 TPD	HOSPET	2006-07
3	M/s GALLENTT METALS LIMITED	3 X 100 TPD	GANDHIDHAM	2005-06
4	M/s RAMGARH SPONGE PVT.LTD.	1 X 100 TPD	RAMGARH	2007-08
5	M/s RAYEN STEEL PVT LTD	1 X 100 TPD	HOSPET	2007-08

<u>S.NO.</u>	<u>NAME OF THE CLIENT</u>	<u>CAPACITY</u>	<u>LOCATION</u>	<u>YEAR</u>
6	M/s M.S.P.METALLICS PVT.LTD.	4 X 100 TPD	JHARSUGUDA	2007-08
7	M/s JAIRAJ ISPAT LIMITED	2 X 100 TPD	BELLARY	2007-08
8	M/S GAGAN FERROTECH PVT.LTD.	2 X 100 TPD	JAMURIA	2008-09
9	M/s SHYAM SEL LIMITED	4 X 100 TPD	JAMURIA	2010-11
10	M/s SHYAM DRI LIMITED	2 X 100 TPD	SAMBALPUR	2010-11
11	M/s ILC INDUSTRIES LIMITED	2 X 100 TPD	HOSPET	2009-10
12	M/s SARAVANA ALLOY STEELS PVT. LIMITED	2 X 100 TPD	HOSPET	2010-11
13	M/s BRAVO SPONGE & POWER PVT LTD	1 X 100 TPD	WEST BENGAL	2017-18
14	M/s SHAKAMBARI ISPAT LIMITED	1 X 100 TPD	WEST BENGAL	2017-18
15	M/S GAGAN FERROTECH PVT.LTD.	2 X 100 TPD	JAMURIA	2008-09

7) 50 TPD SPONGE IRON PROJECTS

S.NO.	NAME OF THE CLIENT	CAPACITY	LOCATION	YEAR
PROJECTS COMPLETED				
CONVENTIONAL TECHNOLOGY				
1	M/s BHILAI ISPAT (P) LIMITED	1 X 50 TPD	BHILAI	2003-05
2	M/s UDAY SPONGE AND POWER PVT.LTD.	1 X 50 TPD	RAIPUR	2004-05
3	M/S SHREE SHYAM SPONGE & POWER (PVT) LIMITED	2 X 50 TPD	RAIPUR	2004-05
4	M/s SHILPHY STEELS PVT. LIMITED	1 X 50 TPD	RAIPUR	2004-05
PRE-HEATING TECHNOLOGY				
5	M/s SHREE VENKATESHWARA SPONGE AND POWER PVT.LIMITED	1 X 50 TPD	BELLARY	2007-08
6	M/s GHANKUN STEELS PVT.LTD.	2 X 50 TPD	RAIPUR	2007-08
7	M/s SHRI BANASHANKARI STEEL & ALLOYS	1 X 50 TPD	BELLARY	2006-07
8	M/s JAI DURGA SPONGE IRON PVT.LTD.	1 X 50 TPD	KODERMA	2007-08
9	M/s GAGAN RESOURCES PVT.LTD.	1 X 50 TPD	RAIPUR	2007-08
10	M/s M.S.P.METALLICS PVT.LTD.	4 X 50 TPD	KYONJHAR	2007-08

8) 25 TPD SPONGE IRON PROJECTS

S.NO.	NAME OF THE CLIENT	CAPACITY	LOCATION	YEAR
PROJECTS COMPLETED				
CONVENTIONAL TECHNOLOGY				
1	M/s BABA VISHWANATH SPONGE PVT.LTD.	2 X 25 TPD	VARANASI	2004-05
2	M/s PALASH SPONGE IRON PVT. LIMITED	1 X 25 TPD	RAMGARH	2004-05
3	M/s RAMNIVASH ISPAT (P) LIMITED	1 X 25 TPD	RAIPUR	2003-04
4	M/s VISHAL SPONGE IRON PVT. LIMITED	1 X 25 TPD	RAMGARH	2003-04
5	M/s GAYATRI SPONGE PVT.LIMITED	1 X 25 TPD	HAZARIBAGH	2003-04
PRE-HEATING TECHNOLOGY				
6	M/s SHREE VENKATESHWARA SPONGE AND POWER PVT.LIMITED	1 X 25 TPD	BELLARY	2007-08
7	M/s GRAVITY TREXIM PVT. LIMITED	1 X 25 TPD	RAIPUR	2004-05
8	M/s GRAVITY TREXIM PVT.LTD.	1 X 25 TPD	RAIPUR	2012-13